

HOLIDAY FIRES



FIRE SAFETY FACTS

***As in every season,
have working smoke
alarms installed on
every level of your
home, test them
monthly and keep
them clean and
equipped with fresh
batteries at all times.
Know when and how
to call for help.
And remember to
practice your home
escape plan!***

**A FIRE SAFETY MESSAGE FROM
THE NEW JERSEY DIVISION OF FIRE
SAFETY AND YOUR LOCAL FIRE SERVICE**



www.state.nj.us/dca/divisions/dfs/



Chris Christie
Governor



New Jersey Division
of Fire Safety

FIRE SAFETY FACTS

**PREVENT
HOLIDAY
FIRES**



www.state.nj.us/dca/divisions/dfs/



THE US FIRE ADMINISTRATION AND THE NATIONAL FIRE PROTECTION ASSOCIATION SHOW AN ESTIMATED 250 HOME FIRES ANNUALLY ARE CAUSED BY CHRISTMAS TREES.

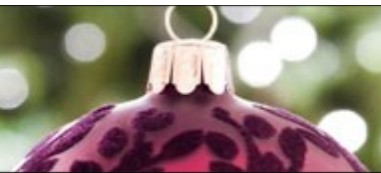
ANOTHER 170 ARE CAUSED BY FAULTY HOLIDAY LIGHTING.

ALONG WITH LIVE FLAME CANDLES, THE ANNUAL HOLIDAY SEASON CAN BE A TIME OF TRAGEDY.

...BUT IT DOESN'T HAVE TO BE!

FOLLOW THE ADVICE OF FIRE SAFETY EXPERTS AND ENJOY THE HOLIDAYS WORRY FREE.

FOCUS ON FIRE SAFETY Holiday Fire Safety



CHRISTMAS TREES

- ▶ **WATER. WATER. WATER.**
- ▶ **DO NOT PLACE NEAR HEAT SOURCE**
- ▶ **DO NOT OVERLOAD LIGHTS AND SOCKET**
- ▶ **DISPOSE OF AT CURB OR RECYCLING CENTER**



CANDLES

- ▶ **BATTERY OPERATED CANDLES ARE THE SAFEST**
- ▶ **PLACE LIGHTED CANDLES ON STABLE SURFACE**
- ▶ **KEEP AWAY FROM FLAMMABLES**
- ▶ **NEVER LEAVE UNATTENDED**



LIGHTING

- ▶ **USE ONLY UL LISTED LIGHTING**
- ▶ **CHECK CONDITION OF STRANDS**
- ▶ **DO NOT OVERLOAD SOCKETS**
- ▶ **DO NOT BLOCK EXITS WITH LIGHTS**